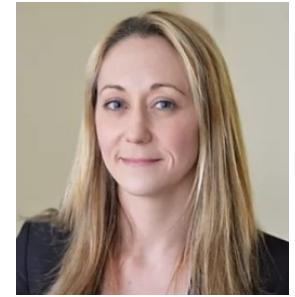




Streamlined Estate Planning
with Jill Miller & Associates, P.C.
(212) 601-2425
www.mtrustlaw.com



About Jill Miller and Lauren Netburn

- Jill has a B.S. from Cornell University, a J.D. from Cornell Law School, *cum laude*, and an L.L.M. in taxation from NYU Law School
- Jill is the Director of Cornell Law School's Estate Planning Clinic and previously taught at Fordham Law School for ten years
- Lauren Netburn, our senior associate, has a B.A. from Tufts University, *cum laude*, and a J.D. from the Benjamin N. Cardozo School of Law, where she concentrated in taxation and was Managing Editor of the Cardozo Journal of Law and Gender. Lauren focuses on all aspects of estate, tax, and charitable gift planning.

Fixed-Fee Structure for a Streamlined Estate

- Our fixed-fee structure is appropriate for young couples, those with smaller estates and those who are looking for a basic Will with no complicated issues
- We are a responsive and caring team that strives to address questions, needs, and concerns quickly and efficiently
- Our timeline has several built-in checkpoints to review documents and answer questions to make sure that our clients understand every step of the process
- All clients have access to materials authored by Jill that she uses in teaching and speaking which are *exclusive* to our clients and are *invaluable* resources for completing their estate planning and protecting themselves and their families. They include:
 - Educational videos
 - Sample letters of wishes to family members, guardians, power of attorney agents, and trustees which address the care of children, the management of their funds and management of our clients' funds if they become disabled
 - Guidance on appointing fiduciaries
 - Estate Planning Organizer – materials to assist clients in their organization of their assets and important personal information
 - End of life guidance/planning